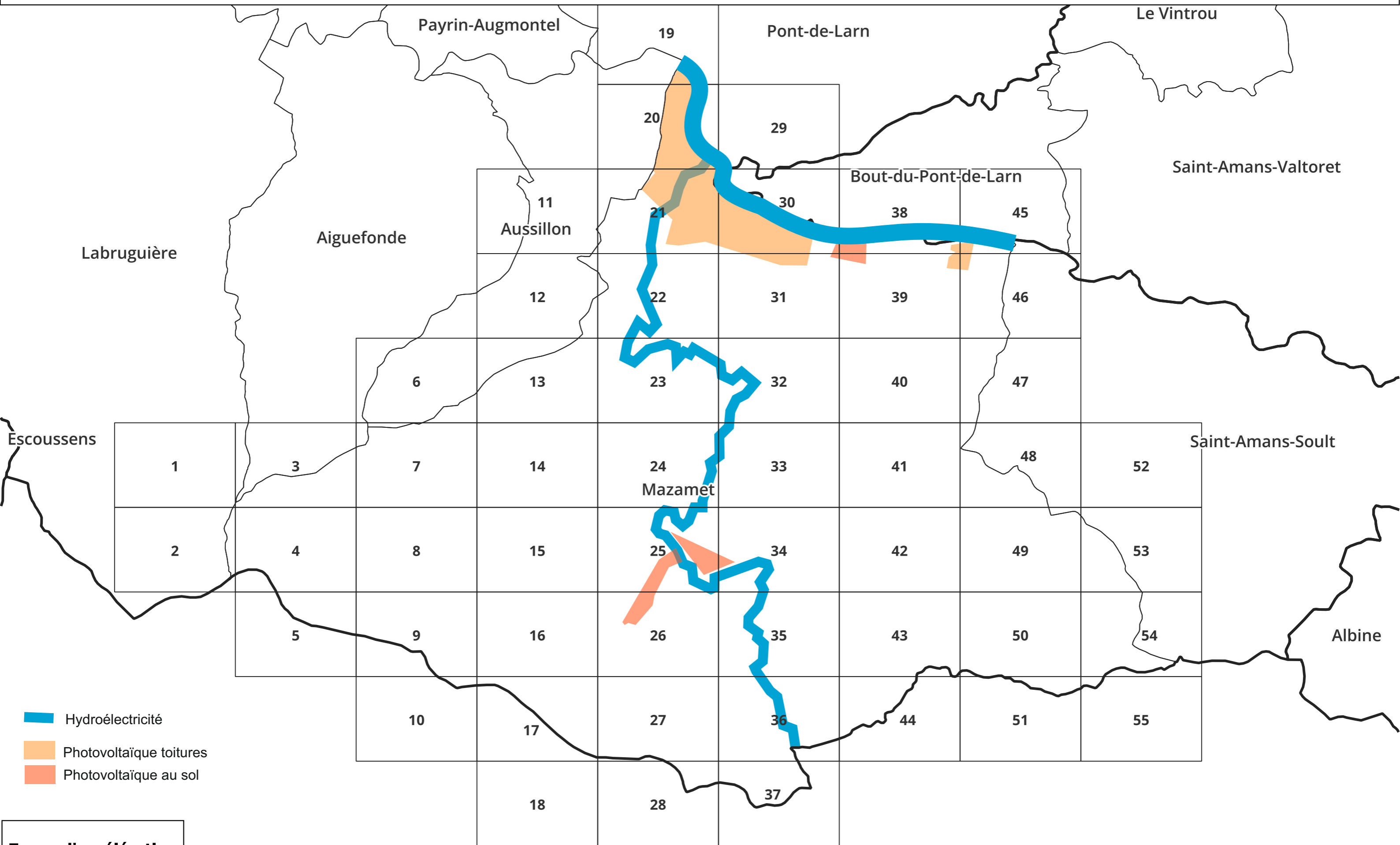


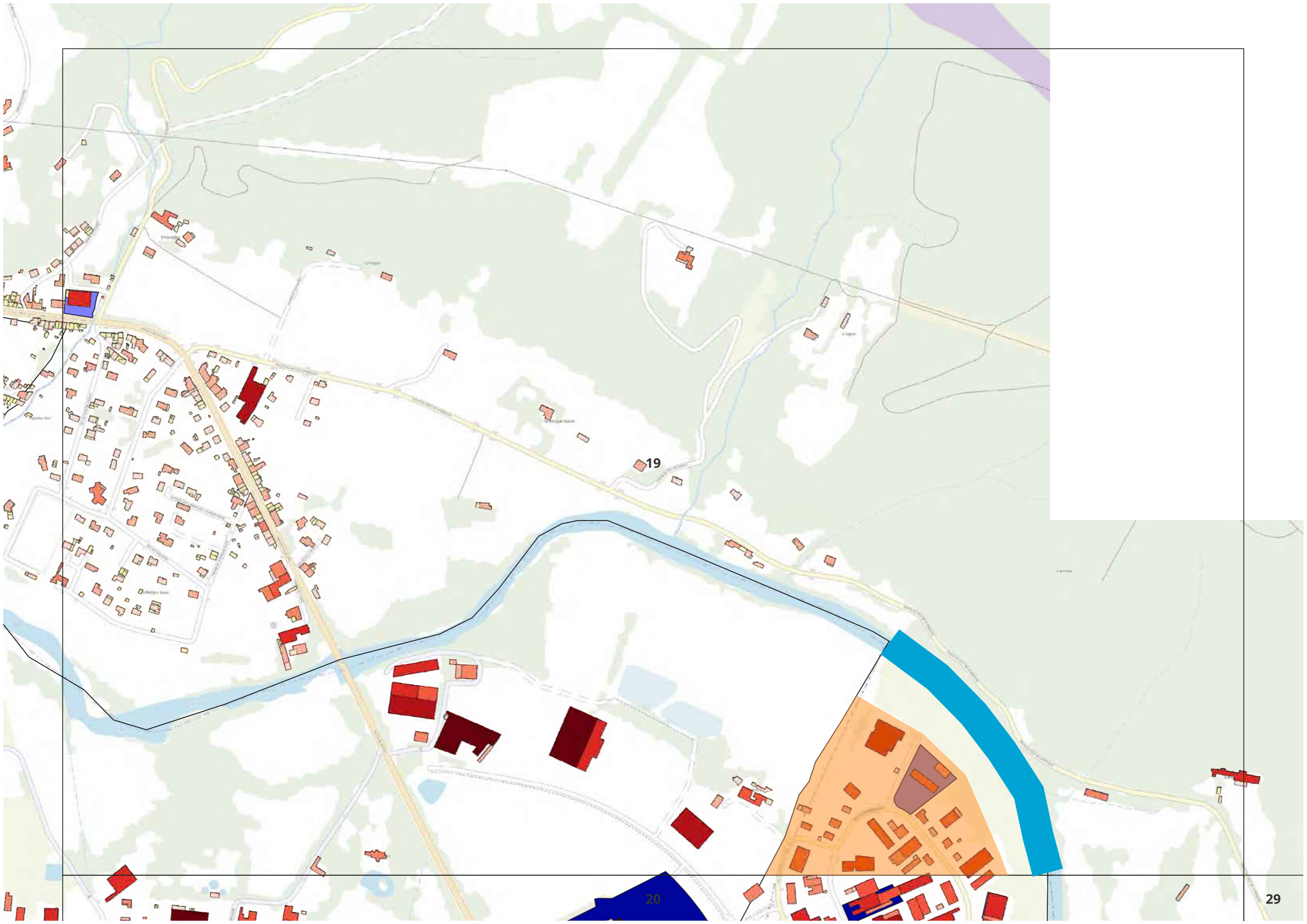
MAZAMET (81163) : carroyage



- Hydroélectricité
- Photovoltaïque toitures
- Photovoltaïque au sol

Zones d'accélération

- Éolien
- Photovoltaïque
- Autre



19

20

29



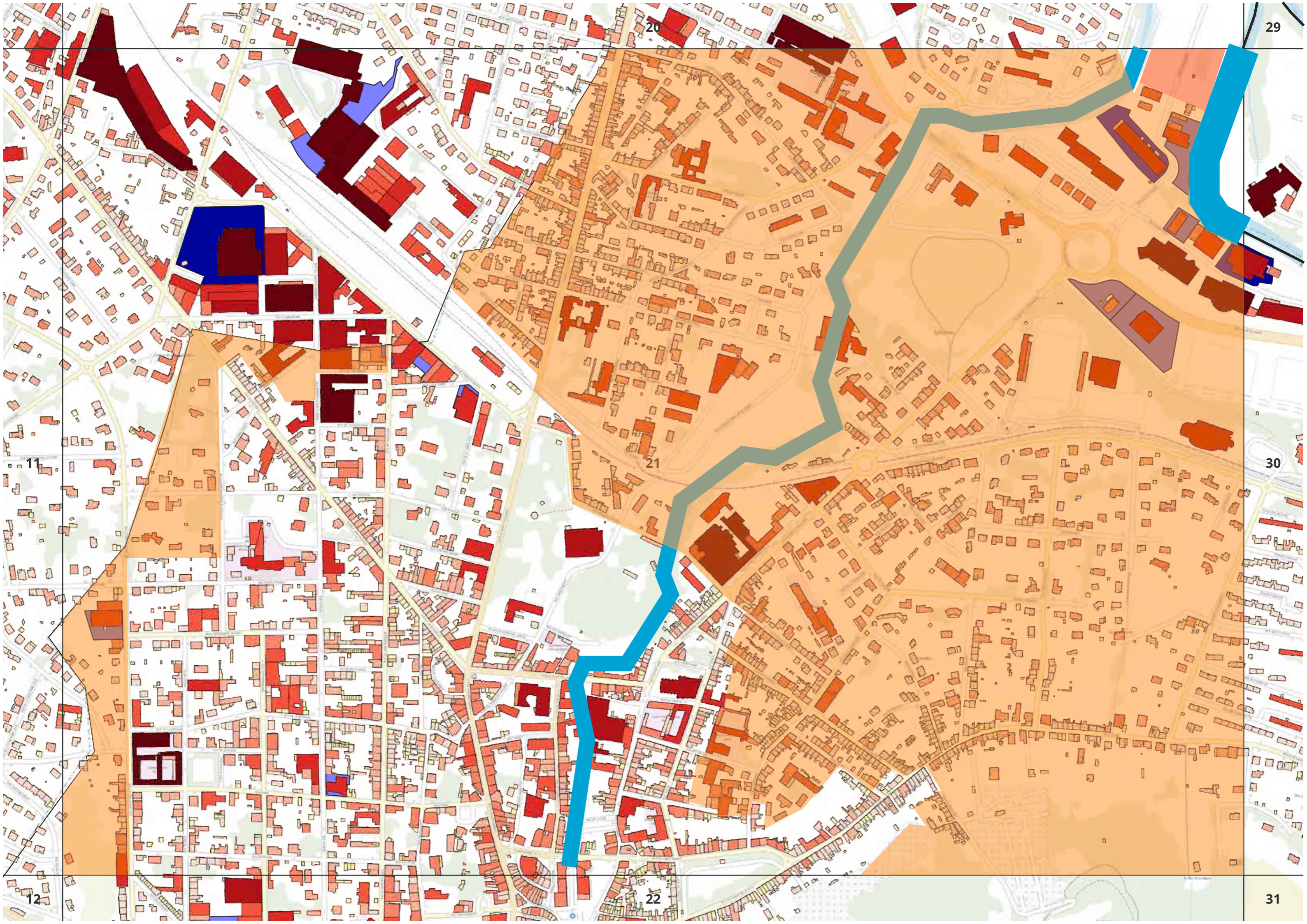
19

20

21

29

30



11

12

20

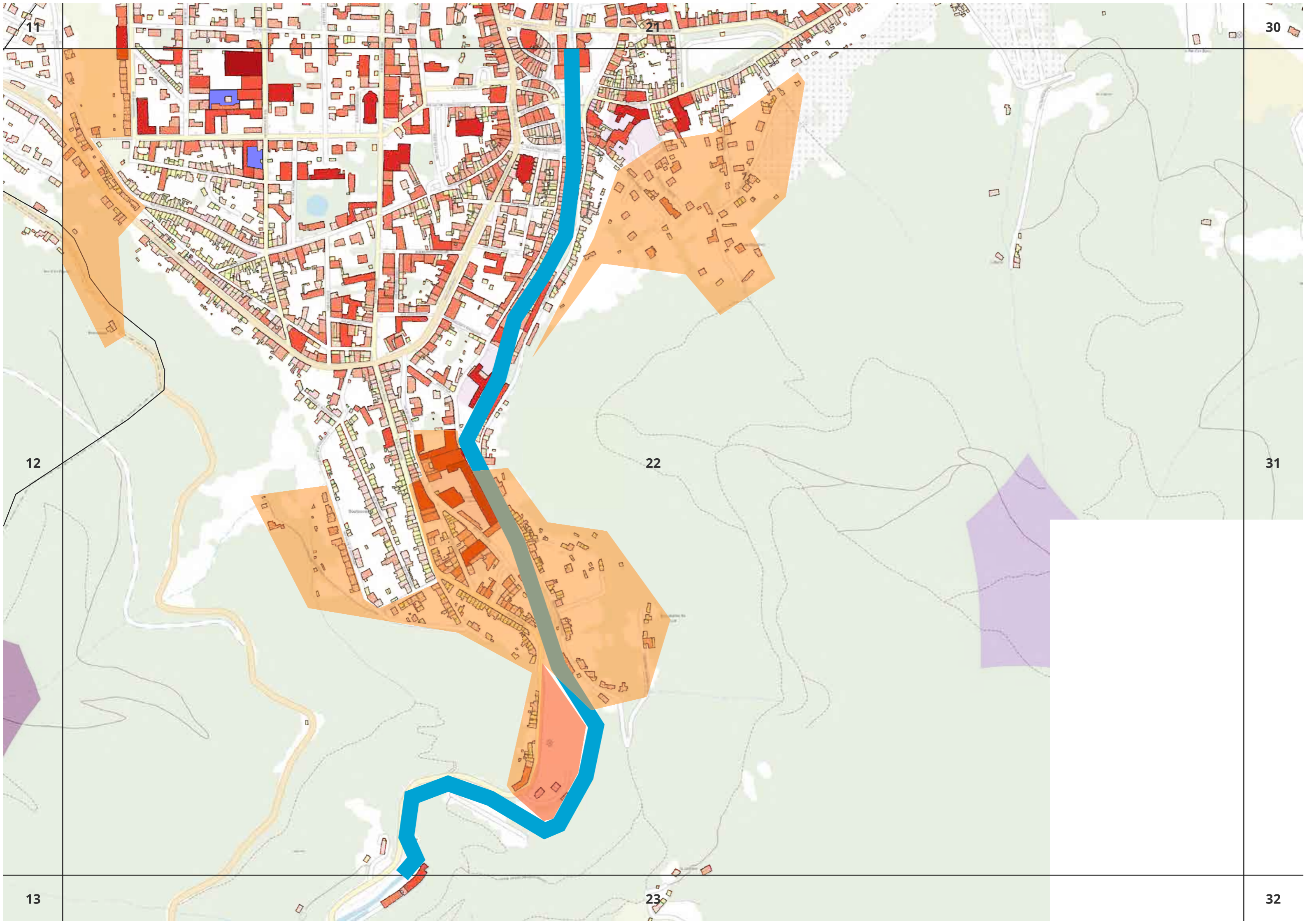
21

22

29

30

31



12

31

22

13

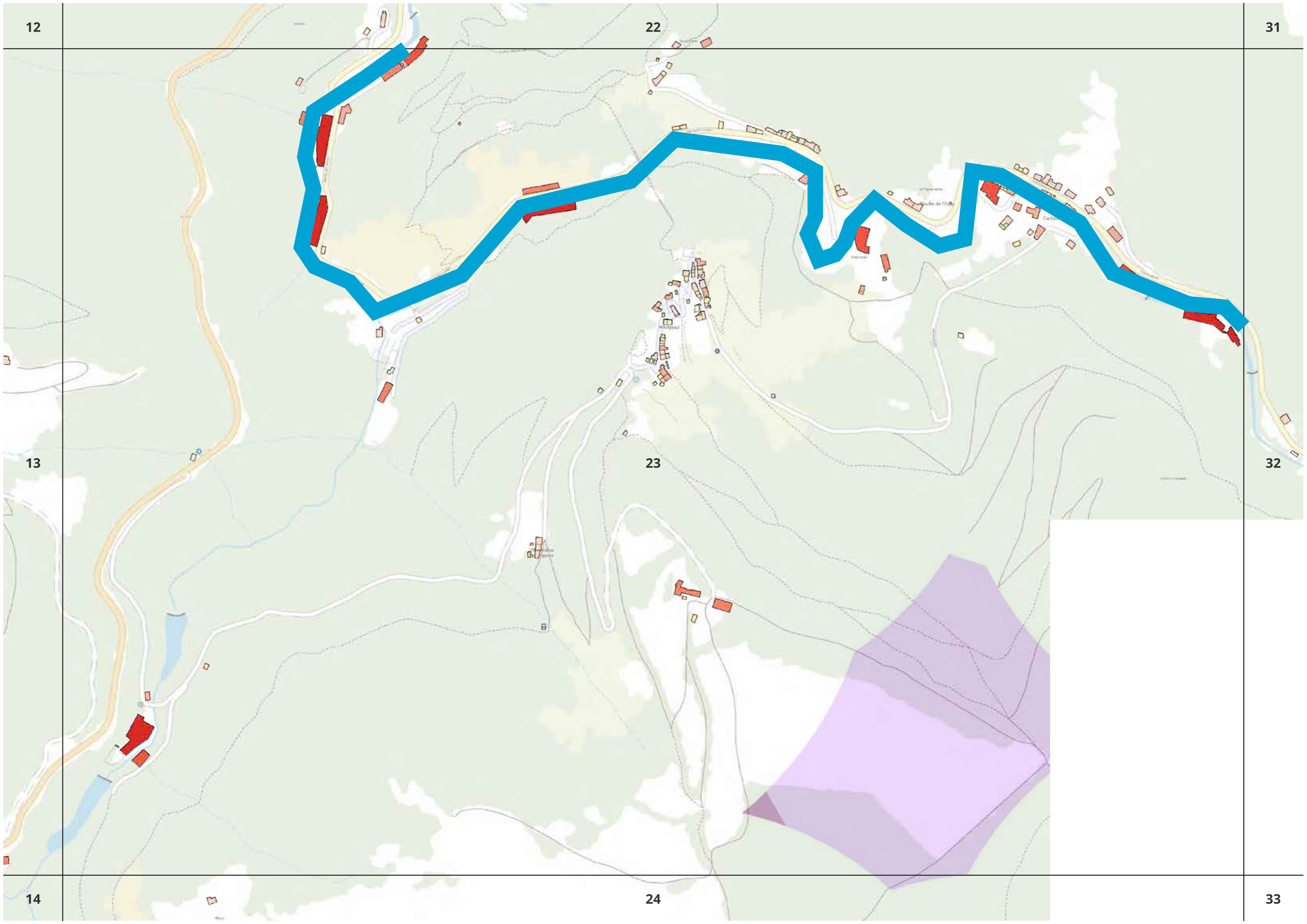
32

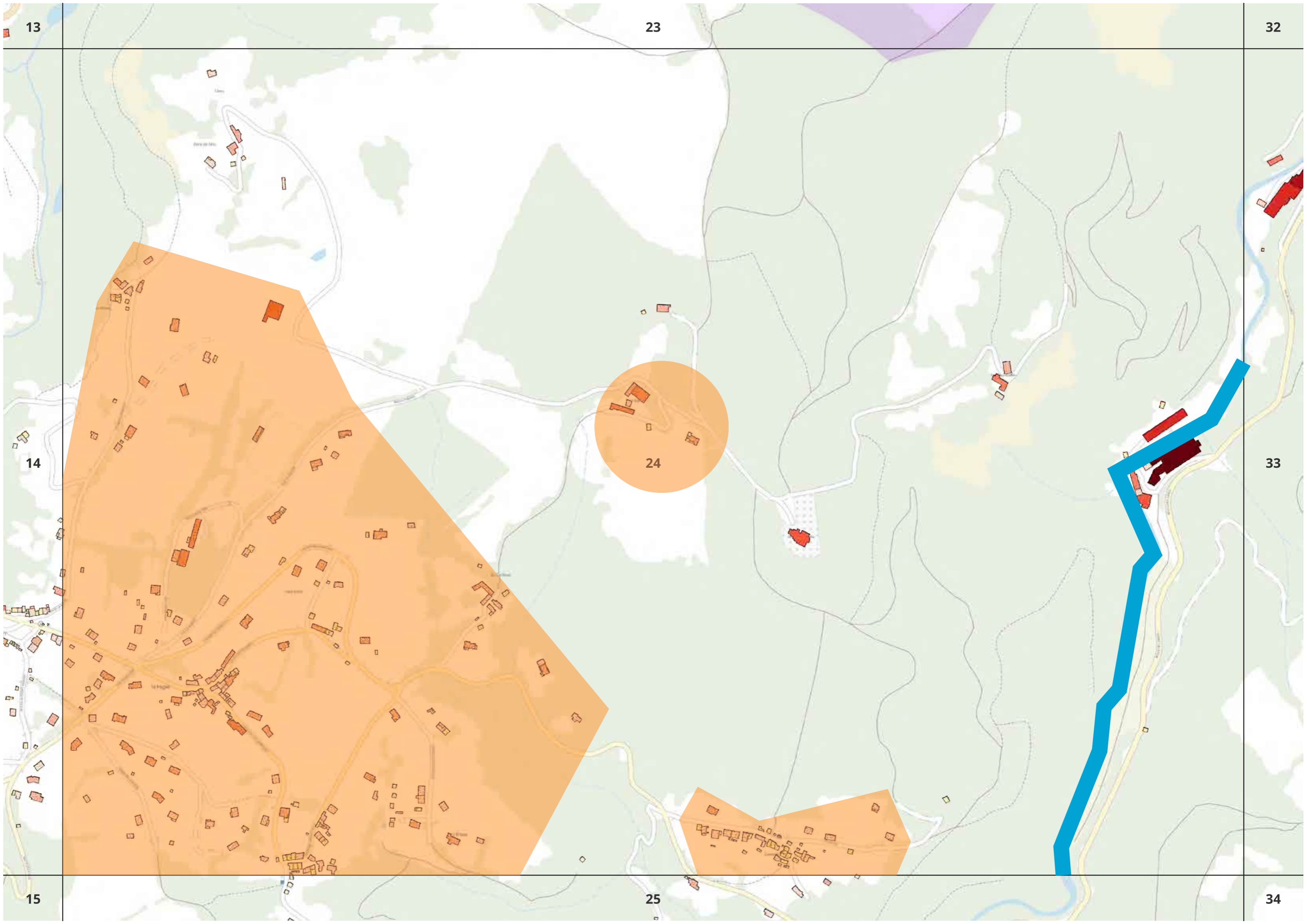
23

14

33

24





13

23

32

14

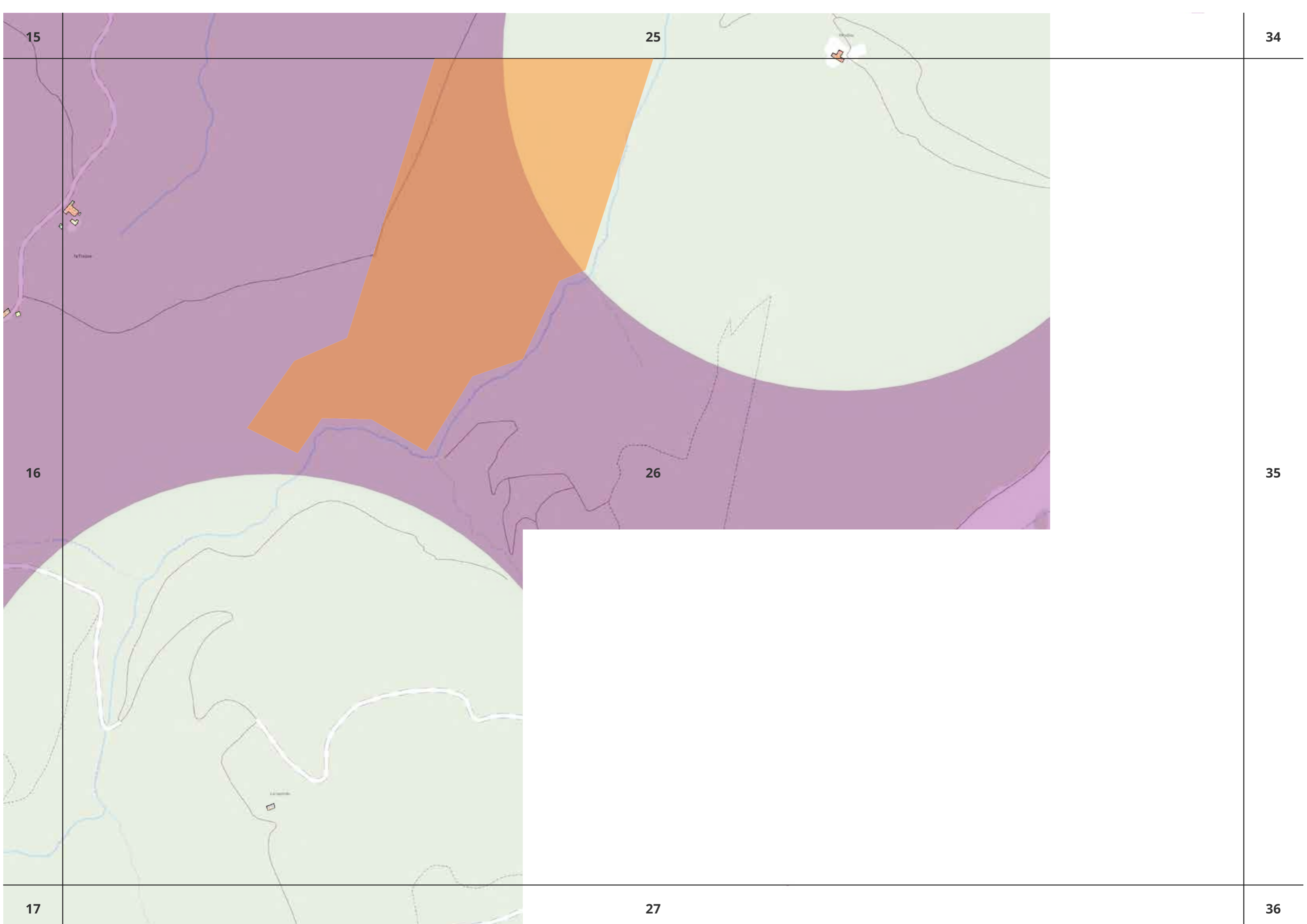
24

33

15

25

34





20

29

21

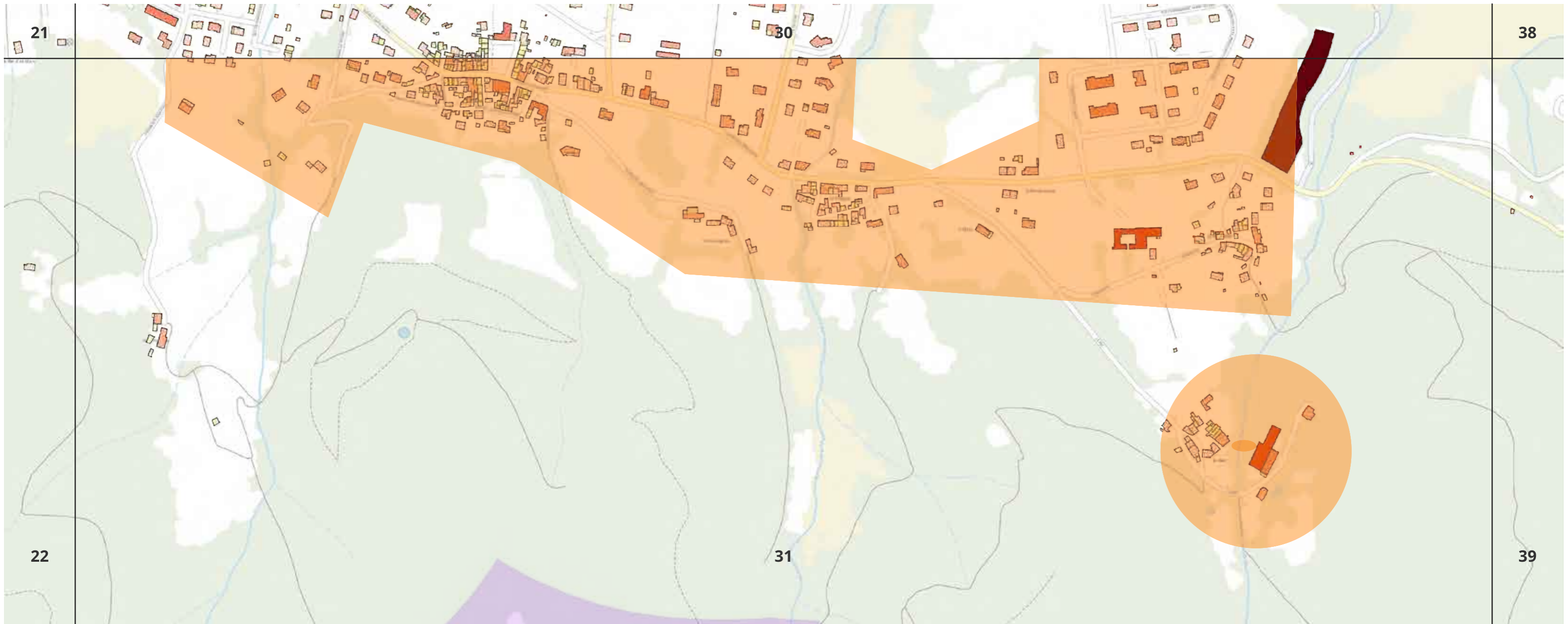
30

38

22

31

39



21

38

30

22

31

39

23

32

40

22

31

39

23

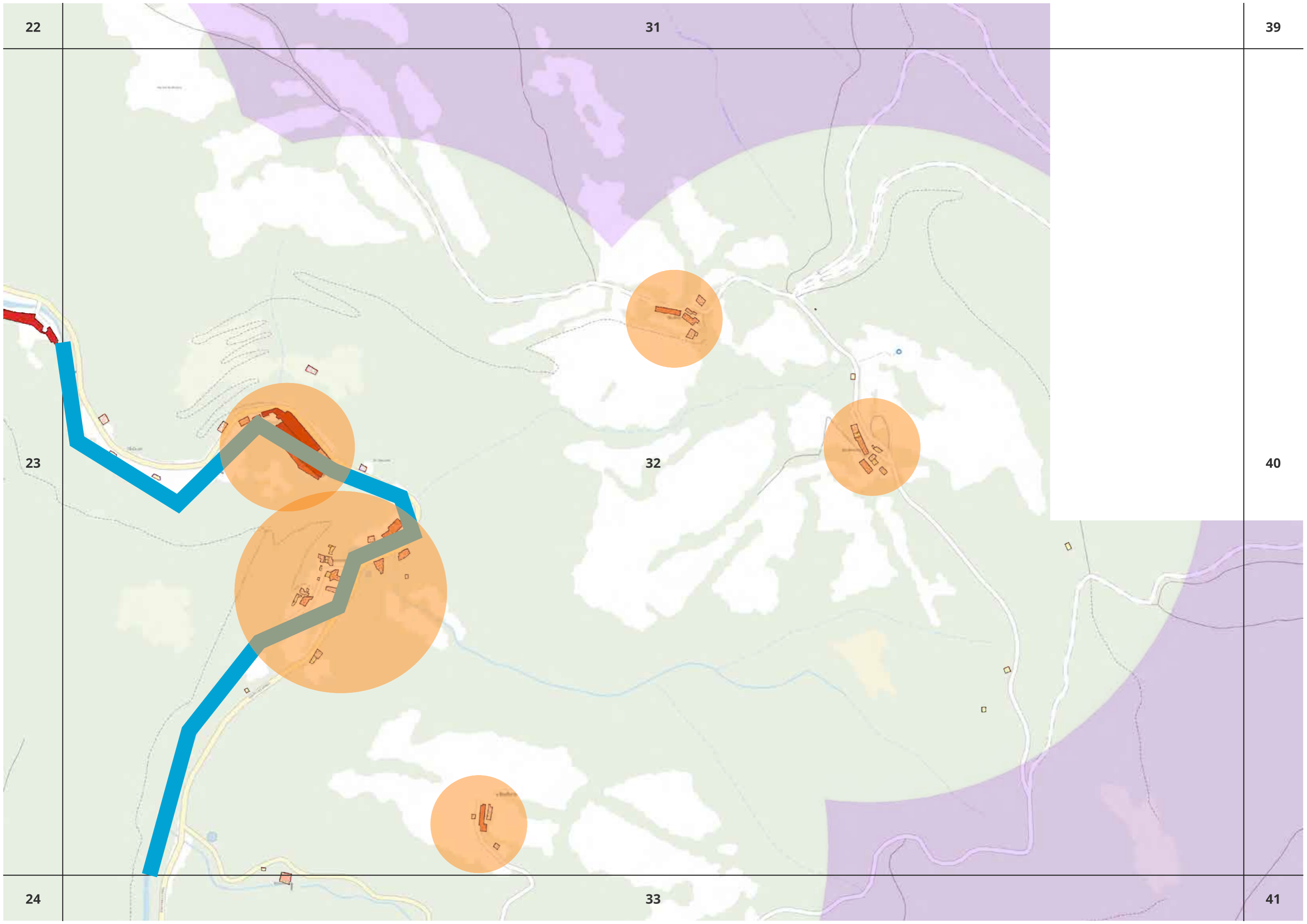
32

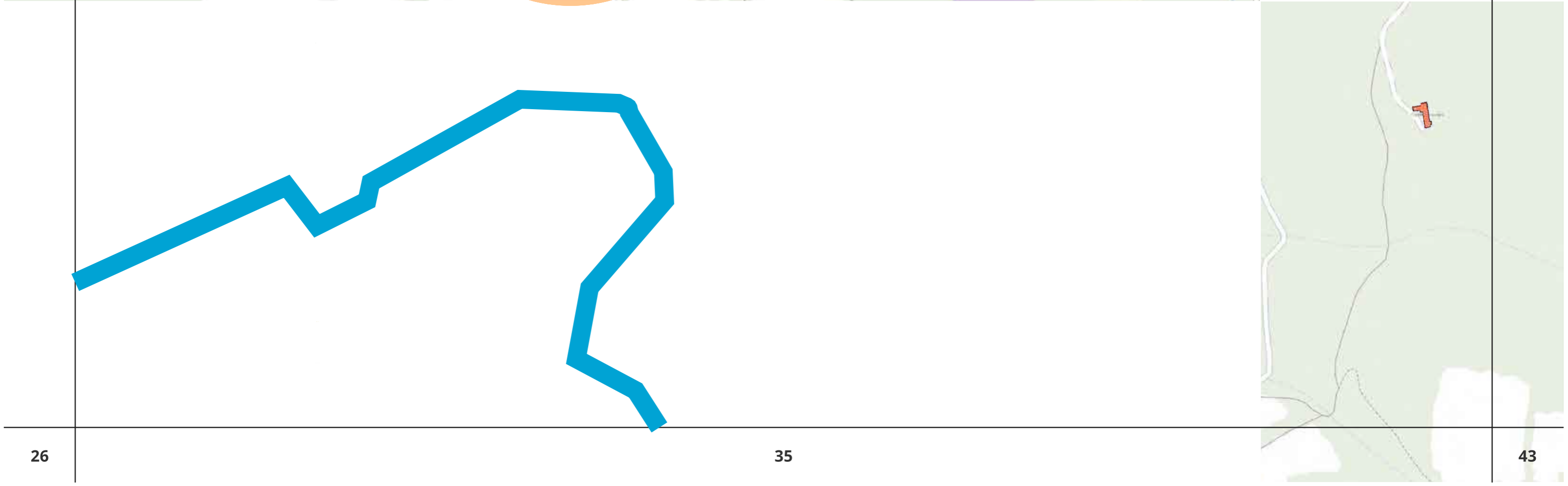
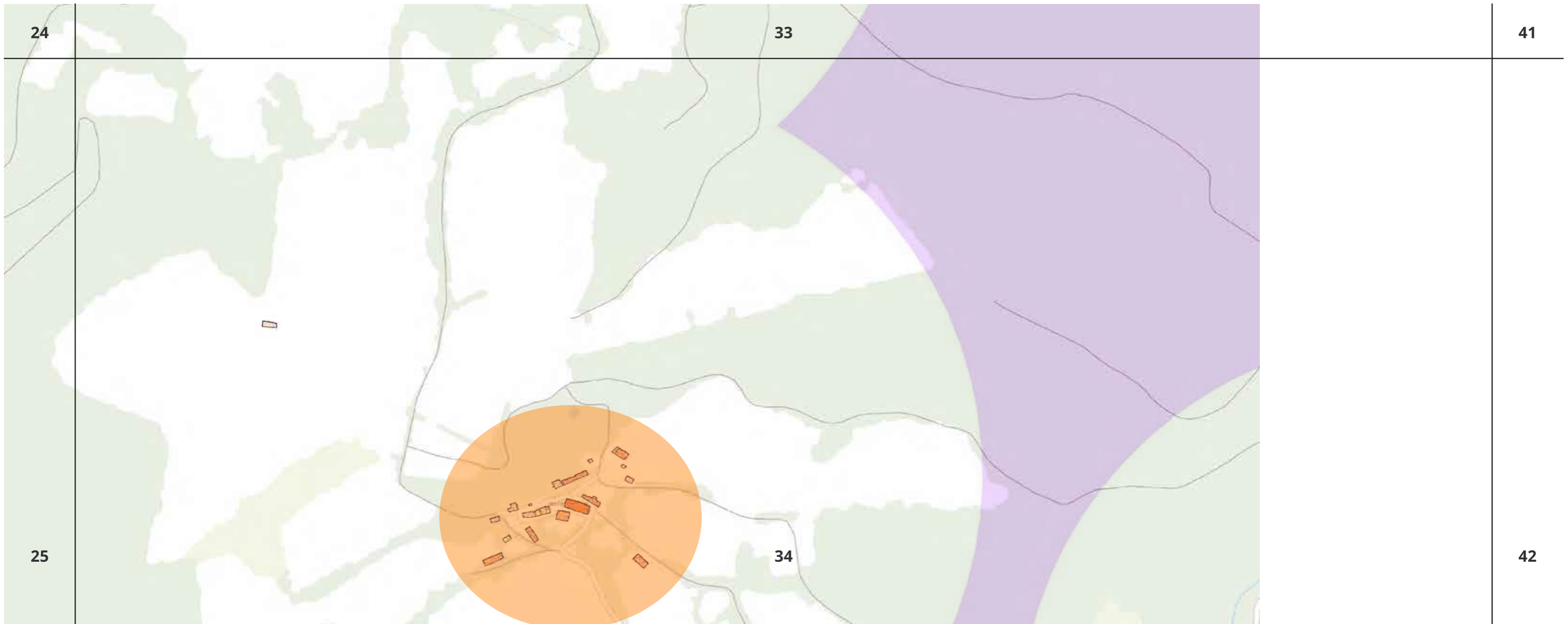
40

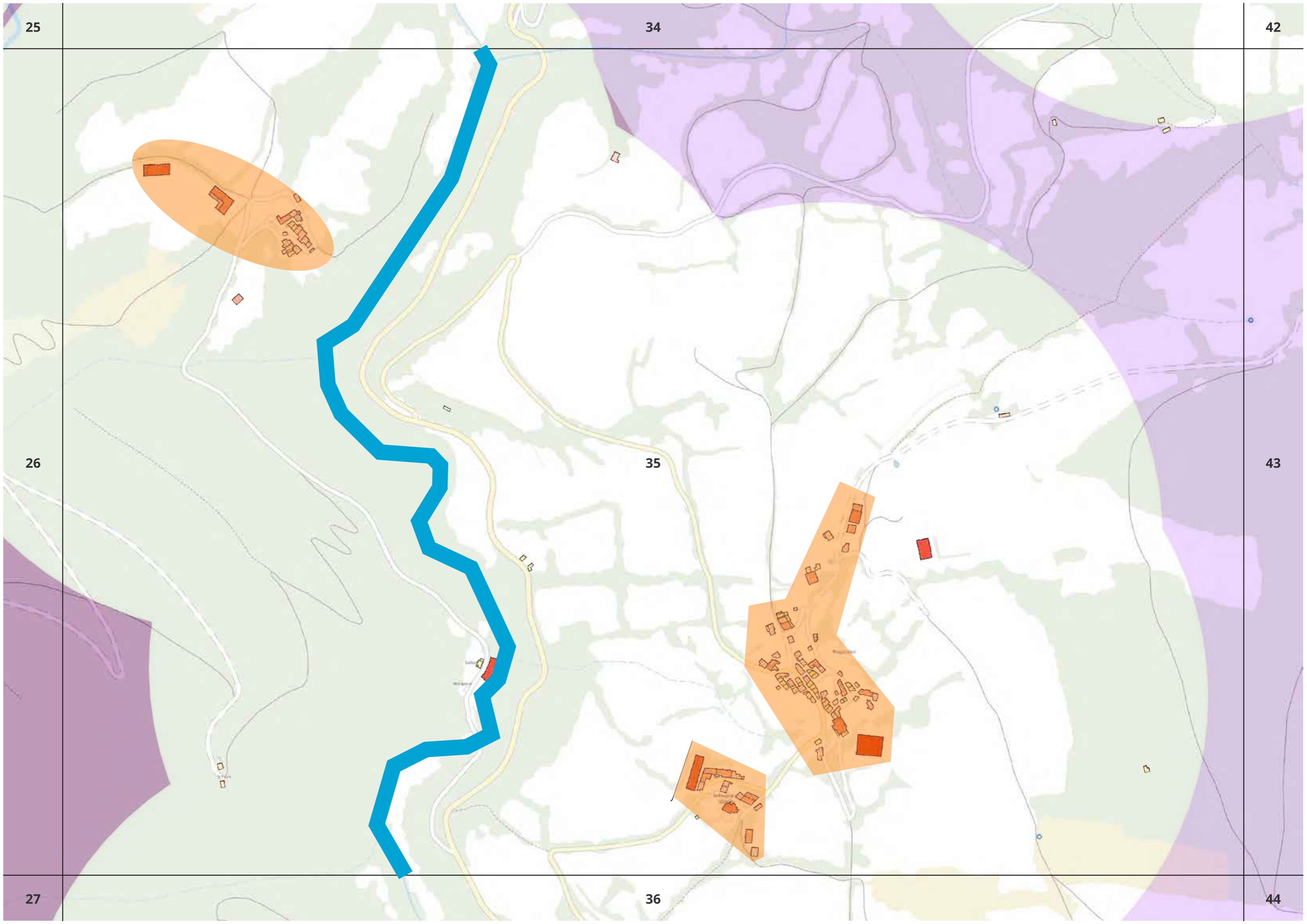
24

33

41







25

34

42

26

35

43

27

36

44

